

BETH ANN MILLER

WRITING PORTFOLIO*

PLEASE CONTACT [BETHANN@BETHANNMILLER.COM](mailto:bethann@bethannmiller.com) FOR FULL
RESUMÉ, ADDITIONAL SAMPLES, AND REFERENCES

*SAMPLES FROM INDEPENDENT CLIENTS, RESEARCH
DISSERTATIONS, AND WORK WITH SPI GLOBAL OR MICROSOFT
NOT AVAILABLE

REGIONAL ECONOMIC DEVELOPMENT CENTER

ANNUAL COMPREHENSIVE ECONOMIC
DEVELOPMENT STRATEGY
COPYWRITING & EDITING
2014 – PRESENT

FULL PDFS FOUND AT:
[HTTPS://WWW.REDC.COM/CEDES](https://www.redc.com/ceds)



TABLE OF CONTENTS

2020-2024 CEDS Goals and Objectives

The development of the Vision, Goals, and Objectives for the REDC CEDS for 2020-2024 was based upon the grassroots input provided at the in-person and online visioning sessions held throughout the region in 2020. REDC also incorporated its experience in the development of the previous five-year CEDS in 2000, 2005, 2010, and 2015. REDC reviewed the Economic Development Goals and Objectives draft with the CEDS Steering Committee electronically before finalizing the material as part of this CEDS document.

The Vision, Goals, and Objectives of the REDC CEDS are designed to promote and encourage responsible, diversified economic development that fosters high-skill, higher-wage jobs, supports innovative industry sectors and clusters, improves economic conditions, and strengthens the region's resiliency to economic disruption. REDC recognizes that economic development is varied and diverse, as is the support needed within our region.

Our vision for southern New Hampshire is a region rich in opportunity for all ages with a diverse business climate; a commitment to preserve our plentiful cultural, natural, and historic resources; a strong local identity; and convenient access to major thoroughfares and cities. Achieving this future will necessitate forward-thinking collaboration among individuals, businesses, communities, and the state to foster a diverse housing stock, a skilled workforce, robust and resilient infrastructure, a business-friendly environment, and strong communities.

CAMP CODY & CODY OUTDOOR CLASSROOM

CREATED & EDITED ALL WEBSITE CONTENT
2016 – 2018

WWW.CAMPCODY.COM
WWW.CODYOUTDOORCLASSROOM.COM

Focus on the Individual

At Camp Cody, we believe that carefully tailoring the summer experience to the individual camper creates, on a larger scale, a successful and enjoyable summer for all campers. In advance of camp, we conduct home visits or connect with parents so that we get to know our campers' background and interests. Using this information, we work with each camper to choose a schedule that incorporates his or her individual interests while still challenging him or her to try new things and build new skill sets. We also thoughtfully craft each cabin community to create the best bunk possible for each camper, and we designate meal seating and travel seating to off-site trips to ensure that campers make new friends outside of their bunks and have an opportunity to learn from all of our counselors. It might seem like overkill, but this attention to the individual is what creates a cohesive and supportive camp community, and makes for an unforgettable summer.

Overview

Outdoor Classroom is a 1-5 day residential outdoor education program that focuses on social and emotional learning, science and engineering skills, and adventure education. Our lessons are standards-aligned and each program is customized to support student learning in the classroom. The hands-on lessons focus on building critical thinking skills and exploring the connections between the natural and human-made world.



SEACOAST MEDIA GROUP

LOCAL CORRESPONDENT FOR FOSTER'S
DAILY DEMOCRAT & THE PORTSMOUTH
HERALD (PRINT & ONLINE)
2016 – 2018

WWW.SEACOASTONLINE.COM

'Keeping Greenland Green'

Residents rail against Eversource's tree cutting

Beth Ann Miller news@seacoastonline.com

Published 6:57 p.m. ET Feb. 11, 2016 | Updated 5:41 a.m. ET Feb. 12, 2016

[View Comments](#)



GREENLAND — Something doesn't feel quite right to a group of residents regarding recent tree cutting in town.

Residents have formed a group, Keeping Greenland Green, in response to energy provider Eversource's Enhanced Tree Trimming initiative. ETT is a process that removes hazard trees along main energy lines, but residents like David Luchsinger wonder if the power company's methods are too aggressive.

A meeting was held on Wednesday in Town Hall to address these concerns. According to Luchsinger, the meeting was standing room only.

"We were happy that the meeting took place, but we were not happy with what Eversource had to say," he said.

INTERNATIONAL ASSOCIATION OF COACHING

REMOTE MANAGING EDITOR
WEBSITE CONTENT, MONTHLY
NEWSLETTER, BLOG POSTS
2013 – 2016

CERTIFIEDCOACH.ORG
CERTIFIEDCOACH.ORG/BLOG

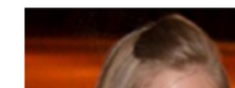


In May, our blog posts explored the **Masteries** – what are they and why are they important? Although it is a familiar word here at the IAC and clearly present in our everyday lives, sometimes it is hard to define exactly what the IAC Masteries are. President Krishna Kumar shares his insight here in the VOICE, and our wonderful writers shed some light on this topic in our **blog**.

Enjoy this month's updates from various committees, as well as information about resources available to you and suggestions for ways you can become more involved with the IAC.

If you have any questions, comments, or blog suggestions, we'd love to hear it! Please contact voice@certifiedcoach.org.

Best,
Beth Ann



Beth Ann Miller holds an MFA in Writing from the University of New Hampshire and a native New Englander. She has a professional background in editing and

EDUCATION-RELATED COPY

HANDBOOK COPY & DESIGN;
WEBSITE CONTENT;
PROCEDURE STATEMENTS;
SOCIAL MEDIA UPDATES;
RESEARCH ARTICLES & DISSERTATIONS

NEW HAMPSHIRE INSTITUTE OF ART
NEW ENGLAND COLLEGE
MISSISQUOI VALLEY SCHOOL DISTRICT
CHESTER COLLEGE OF NEW ENGLAND

UNIVERSITY OF NEW HAMPSHIRE
[HTTPS://WWW.UNH.EDU/RESEARCH/](https://www.unh.edu/research/)

Research Profile: David Finkelhor



story by Beth Ann Miller with contributions by Michael Thompson and Lynnette Hentges
As Director of the [Crimes against Children Research Center \(CCRC\)](http://www.unh.edu/ccrc/) (<http://www.unh.edu/ccrc/>) at UNH, David Finkelhor credits the worldwide success of the CCRC's cutting-edge research to the tremendous support UNH provides. Since coming to UNH in 1976, Finkelhor has conducted research and published on the subjects of child maltreatment, family violence, sexual abuse, child homicide, and missing and abducted children, establishing him as a leader in these fields. The recipient of many grants and awards, he finds much pride in the growth and success he's seen in the CCRC, which he attributes to the fact that he is surrounded by incredibly passionate and hard-working colleagues and collaborators.

LAND ACKNOWLEDGEMENT

We acknowledge that we gather as Missisquoi Valley School District on the traditional land of the Wabanaki and Iroquois peoples past and present, and honor with gratitude the land itself and the people who have stewarded it throughout the generations. This calls us to commit to our learning so that we can become better stewards of the land we inhabit.

OUR MISSION

To help children and teenagers of all backgrounds thrive and become successful, happy, informed citizens. We aim to create and expand opportunities for all students to engage in leadership development; creative enrichment; healthy lifestyle and fitness choices; social awareness; workforce skill-building; and hands-on experiential academic support.

VISION STATEMENT

All children and teenagers in the Missisquoi Valley School District will succeed in school, graduate from high school, and choose a positive and productive future path that is best suited to each individual. MVSD After School Programs will actively support, encourage, and celebrate this effort.

CREATIVE PUBLICATIONS

ORIGINAL SHORT FICTION &
CREATIVE NON-FICTION PUBLICATIONS
INCLUDE:

PANK MAGAZINE
THE NORTHERN NEW ENGLAND REVIEW
THE NORMAL SCHOOL
RIVER TEETH
CAST-IRON CONTENT

WWW.BETHANNMILLER.COM



FICTION 11.2 / FALL / WINTER 2016

YOUR BONES

BETH ANN MILLER

I saw your skull in the Smithsonian today. Emmie warned me, she said I'd see you everywhere: hear you on the radio, spot you in the café, smell you on the sheets I washed a dozen times since you left. She and Luke have been trying to take care of me